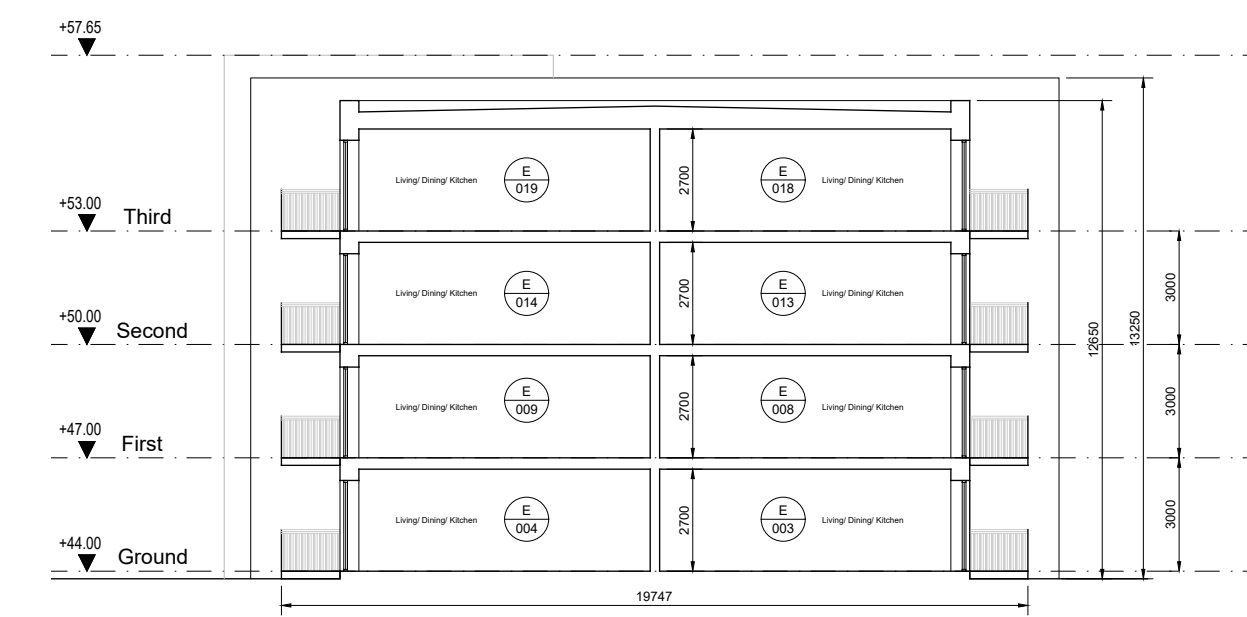


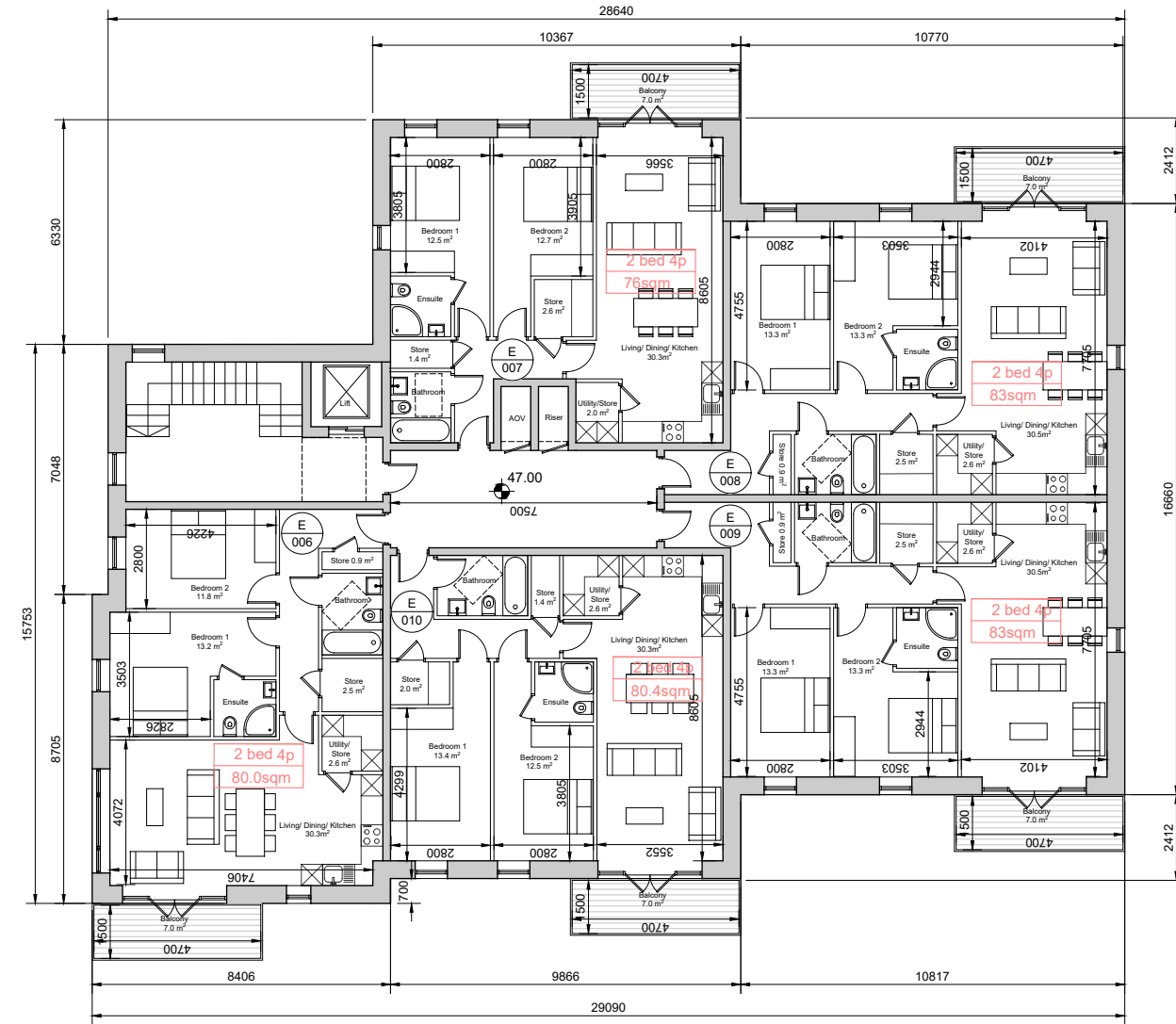
SECOND FLOOR PLAN



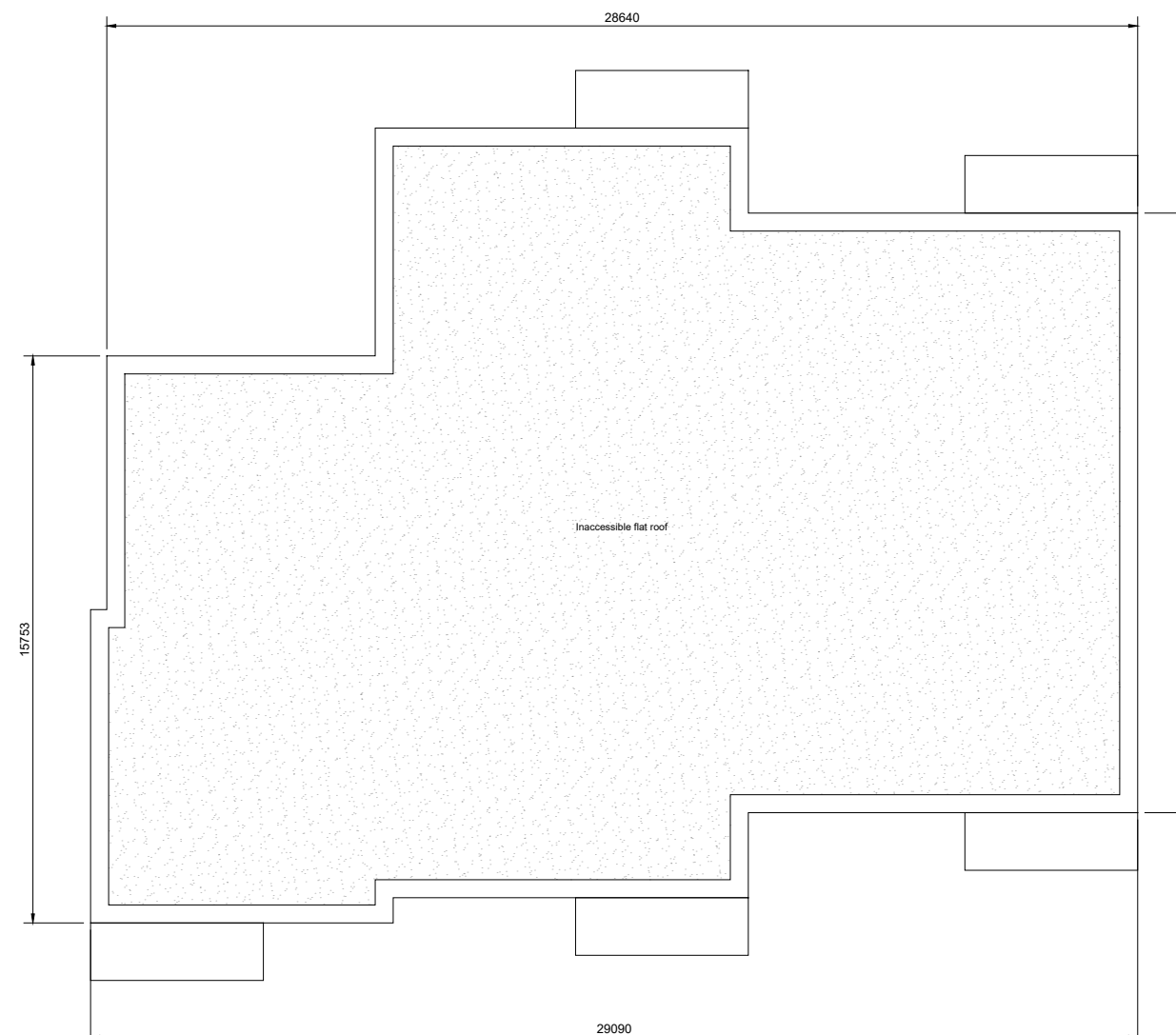
NORTH ELEVATION



CROSS-SECTION



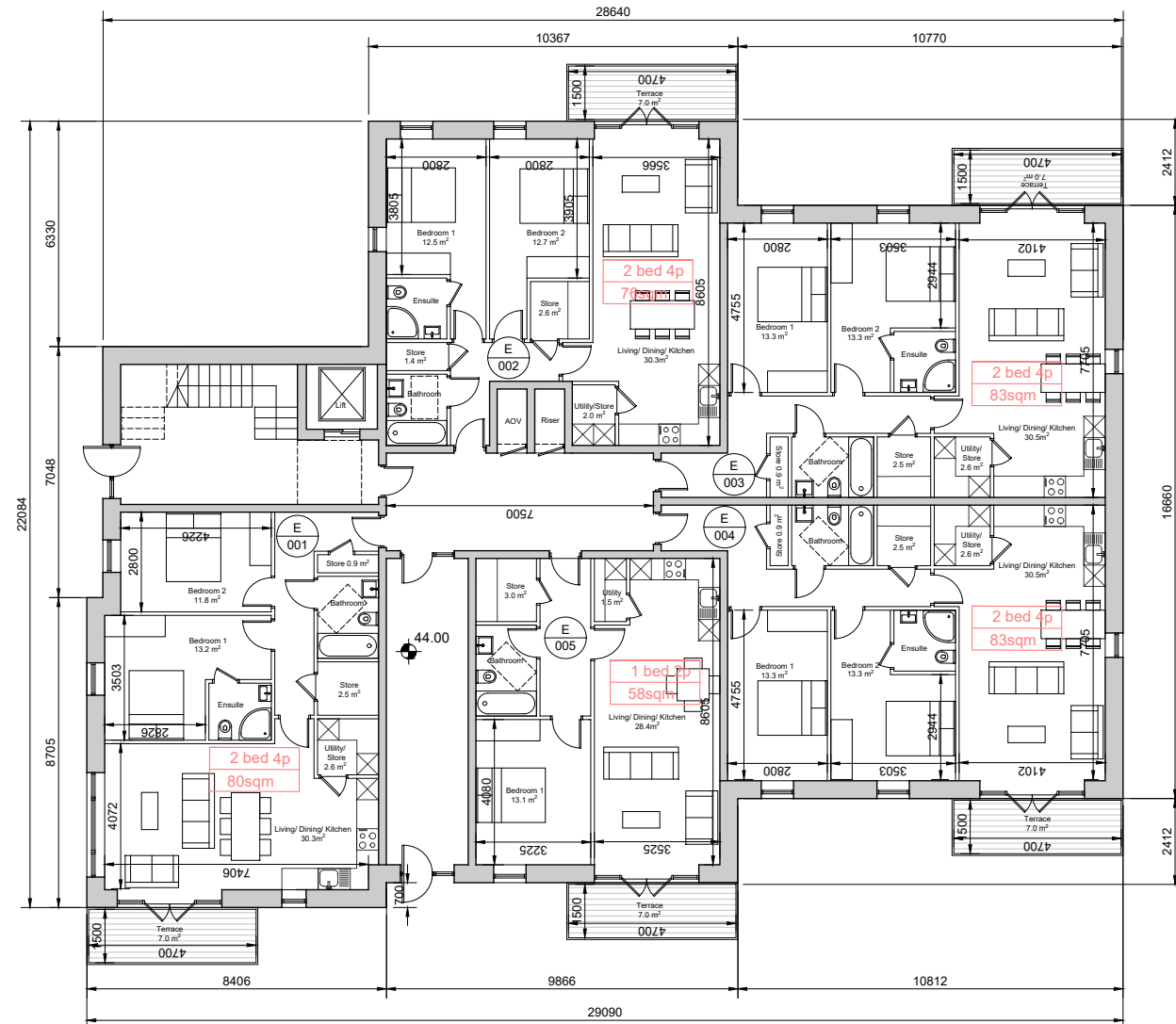
FIRST FLOOR PLAN



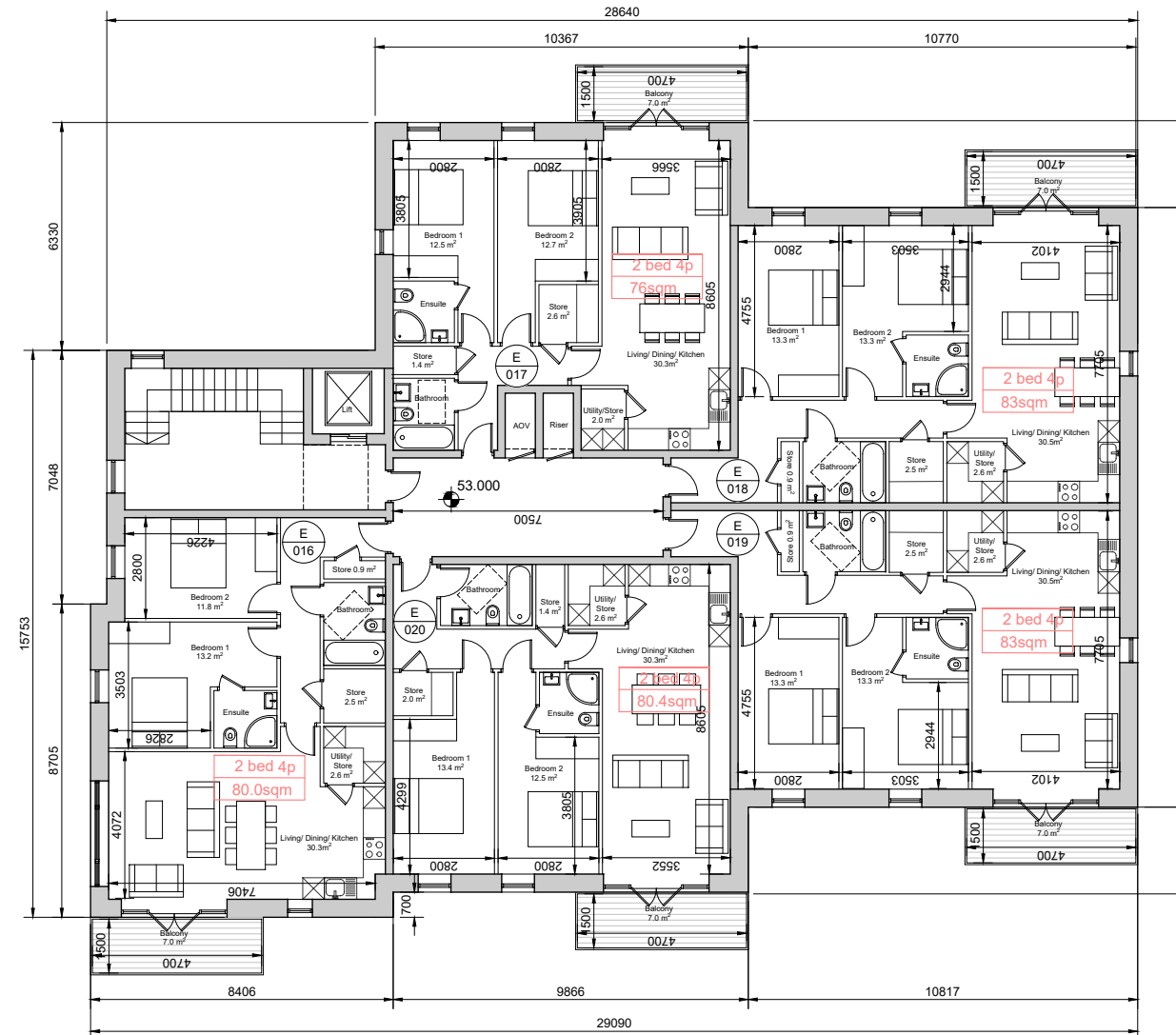
ROOF PLAN



WEST ELEVATION



GROUND FLOOR PLAN

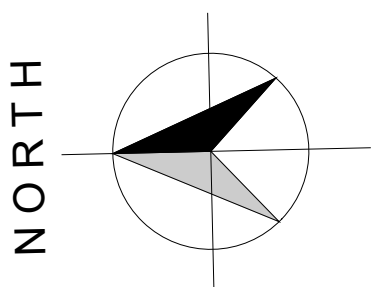


THIRD FLOOR PLAN



EAST ELEVATION

- © This drawing is copyright.
- 1 Do not scale this drawing.
- 2 Errors and omissions to be immediately notified to Architect.
- 3 All dimensions to be checked on site.
- 4 To be read with relevant Engineers drawings.



Note:

Furniture and fittings shown are indicative.
Wardrobes in bedrooms are not counted as part of designated storage areas.

All dimensions in millimetres

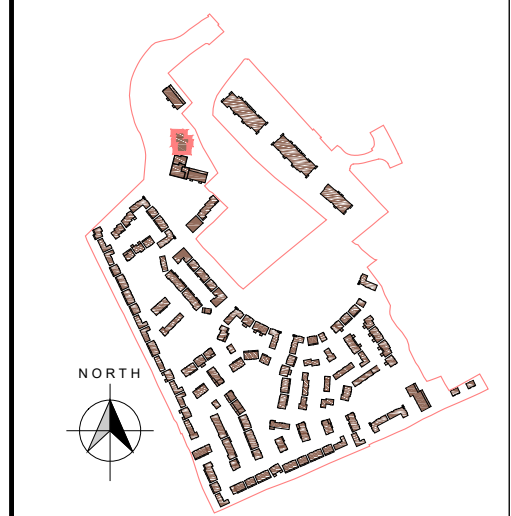
External Finishes:

Roof:
Single-ply membrane to flat roof behind parapets.

Walls:
Selected facing brick
Through-colour render

Windows:
Aluminium and/or timber framed

Balcony balustrades:
Metal balustrades with infill vertical bar
Hedging beyond ground floor balustrading.



revisions description date ins

revisions	description	date	ins
	Block E Floor Plans, Roof Plan, Elevations & Section		

job	scale
Development at Academy Street Navan	1:200 A1

client	date	drawn	checked
COINDALE LTD.	NOV 19	LD	PMV

issue
PLANNING

**CONROY CROWE KELLY
ARCHITECTS**
65 MERRION SQUARE
DUBLIN 2

PHONE 66139901 FAX 6765715
E-MAIL info@ceck.ie

drawing no.
1828 P APT-E-100
revn.